



WASHINGTON NATIONAL TAX

Where tax
professionals
go to build
a great career

TAX

AUDIT ■ TAX ■ ADVISORY



Interpreting the latest legislative and regulatory developments. Providing advice on federal, cross-border, and state tax issues. Advising companies on the tax consequences of mergers and acquisitions. That's the kind of guidance members of KPMG's Washington National Tax (WNT) practice offer our clients and the marketplace—every day of the week.

WNT benefits from a strong team of dedicated men and women who are eager to take on the complexities of today's global tax issues to meet the diverse needs of our broad client base. Currently, we are interested in recruiting other talented professionals—like you—who share our commitment to tax law.



"The stakes are quite high in this industry. So that is why we at Washington National Tax rise and fall based on the level of talent we employ. Every day of the week we're committed to being the best at what we do."

Steven R. Lainoff
National Principal in Charge, WNT



Washington National Tax is the technical core of KPMG's tax practice. Founded in 1959, the WNT team consists of approximately 150 tax professionals, many with significant prior experience at the Internal Revenue Service, U.S. Department of the Treasury, U.S. Congress, and the U.S. Tax Court and other federal courts. The practice prides itself on creating a work environment that is research-driven, collaborative, and offers its members an attractive quality of life. For you this means the opportunity to work with some of the best and brightest in a collegial environment. It also means benefiting from KPMG's work/life initiatives that help our people balance their professional careers and personal lives.

A great place to work, a great place to live.

One of the great advantages of joining WNT is that it puts you in the heart of the action. You'll be working at the crossroads where government and business intersect. So, if you already live and work in the D.C. area, you'll find yourself right at home. And if you don't, you'll soon discover that the greater Washington area offers a wealth of

treasures, including historical monuments, the Smithsonian Institution, the Kennedy Center, expansive parks and river systems, art galleries, and a diverse business community. It all adds up to a rich cultural and professional atmosphere that provides a vibrant backdrop in which to work and live.

KPMG and WNT: A great place to build your career.

KPMG understands that your skills, background, and drive are highly prized in the tax industry. That's why we devote so much of our energies to ensuring that our organization is committed to your personal and professional growth. Over the years, the firm has won prestigious workplace awards, including *BusinessWeek's* 50 Best Places to Launch a Career, *Working Mother's* 100 Best Companies, and *Fortune's* 100 Best Companies to Work For.

Here are just a few ways we help you build your career at KPMG's Washington National Tax practice:

Providing a tool to help you map your future.

KPMG LLP is the only Big Four accounting firm that provides a Web-based "career architecture" program to help you plan your own career path.

Offering career-building rotations throughout the United States.

KPMG's rotation program provides you exceptional visibility as a professional while introducing you to new areas, helping to enhance your technical



skills, and showing you how business—and life—is conducted outside your practice or home office.

Getting you the skills training you need.

To support your assignments and enhance skills, the firm offers training via classroom, the Web, video, home office, or podcast.

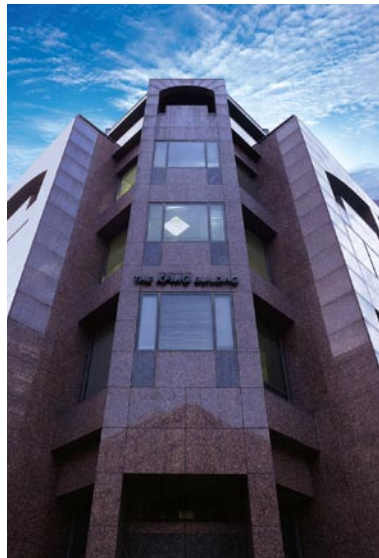
Supporting diversity in the workplace.

KPMG's diversity networks increase the visibility of diverse people among the general workforce, helping to create inclusiveness between the firm's leadership and its employees and

providing opportunities for networking and mentoring.

KPMG's Washington National Tax practice: It's the place where tax professionals like you can find exciting opportunities to build a great career.

To learn more, visit kpmgcareers.com



KPMG's Washington Office

Service Areas

Our WNT practice affords a wide range of opportunities and service areas from which you can choose:

- *Corporate* group advises clients on all aspects of corporate taxation, consolidated returns, bankruptcy, and much more.
- *Economic and Valuation Services* group offers strategic transfer price planning, economic analysis, transfer price dispute resolution, and risk management.
- *Exempt Organizations* group specializes in private nonprofit organizations, government entities, donors, and managers of tax-exempt funds.
- *Federal Legislative and Regulatory Services* group provides timely information for federal tax policy developments and offers representation before the IRS, U.S. Department of the Treasury, and Congress.
- *Financial Institutions and Products* group assists clients with issues facing both domestic and international commercial and investment banks, broker-dealers, insurance companies, mutual funds, and hedge funds.
- *Income Tax and Accounting* group advises clients on all aspects of tax accounting periods and methods, the timing of income and deductions, installment sales, inventories, and uniform capitalization rules.
- *Individual, Trusts, and Estates* group specializes in estate and gift taxation, generation-skipping transfer taxation, fiduciary income taxation, individual income taxation, and international transfer and trust taxation.
- *International Corporate Services* group advises clients in all aspects of international mergers and acquisitions, joint ventures, income tax treaties, and transfer pricing.
- *Mergers and Acquisitions* group provides guidance during the various phases of mergers and acquisitions.
- *International Executive Services* group provides advice to clients regarding U.S. residency status of individuals, application of the foreign earned income and housing cost exclusions, foreign tax credits, and income sourcing.
- *Passthroughs* group advises clients about the federal taxation of passthrough entities, such as partnerships, S corporations, and real estate investment trusts.
- *Practice, Procedures, and Administration* group advises clients in all facets of tax shelter/reportable transaction disclosure, list maintenance and registration, penalties, statutes of limitations, refunds, reporting, and section 9100 relief.
- *State and Local Tax* group provides tax technical advice—with respect to state and local taxation of corporations and passthrough entities—on issues of unclaimed property, income, franchise, payroll, unemployment, sales and use taxes, etc.

KPMG LLP is an affirmative action, equal opportunity employer. M/F/D/V. Employment with KPMG is "At Will," which means that employment may be terminated with or without cause and with or without notice at any time at the discretion of either KPMG or the employee.

©2008 KPMG LLP, a U.S. limited liability partnership and a member firm of the KPMG network of independent member firms affiliated with KPMG International, a Swiss cooperative. All rights reserved. Printed in the U.S.A. KPMG and the KPMG logo are registered trademarks of KPMG International, a Swiss cooperative. 071228